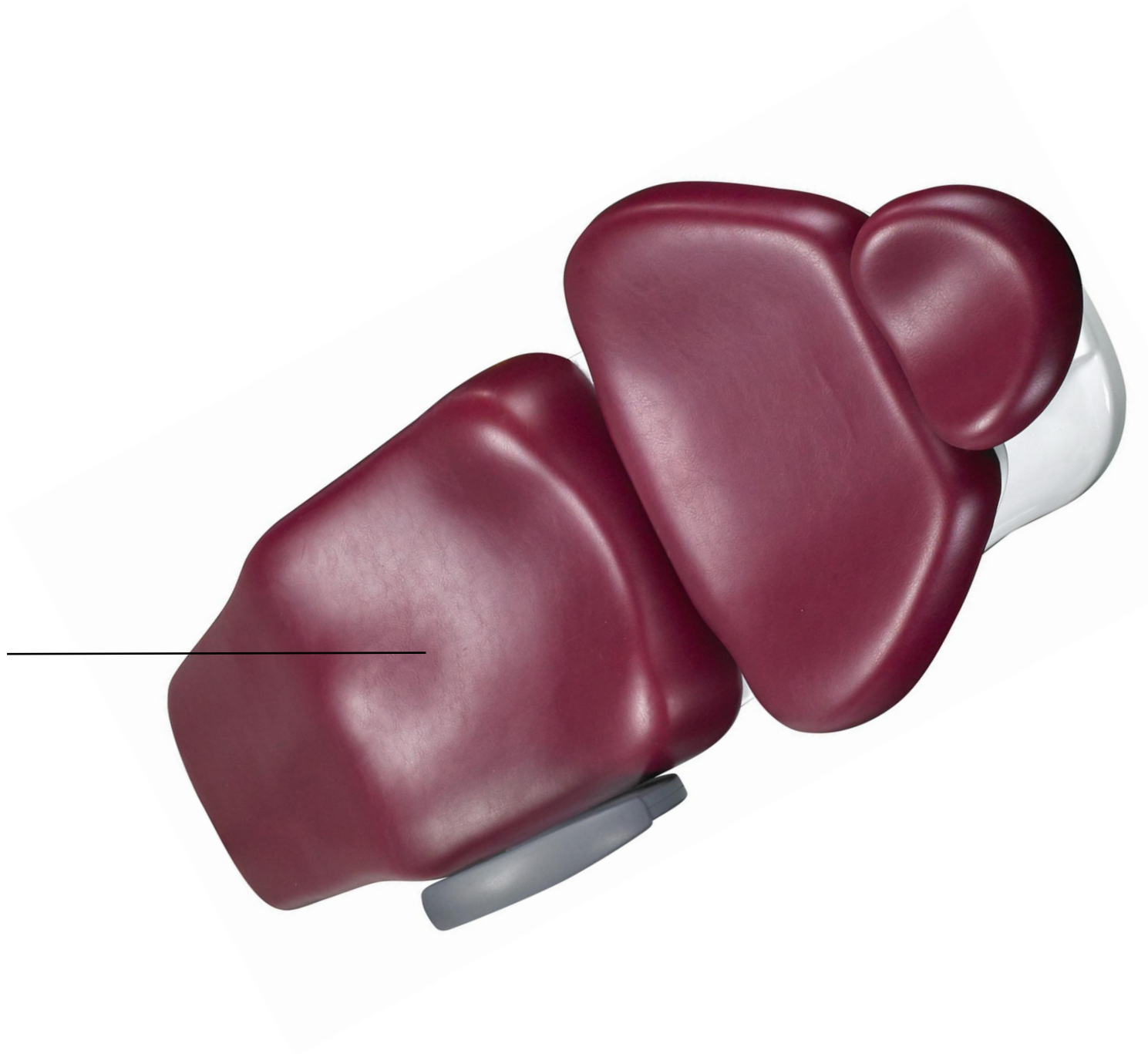




- **Luxury PU Leather**

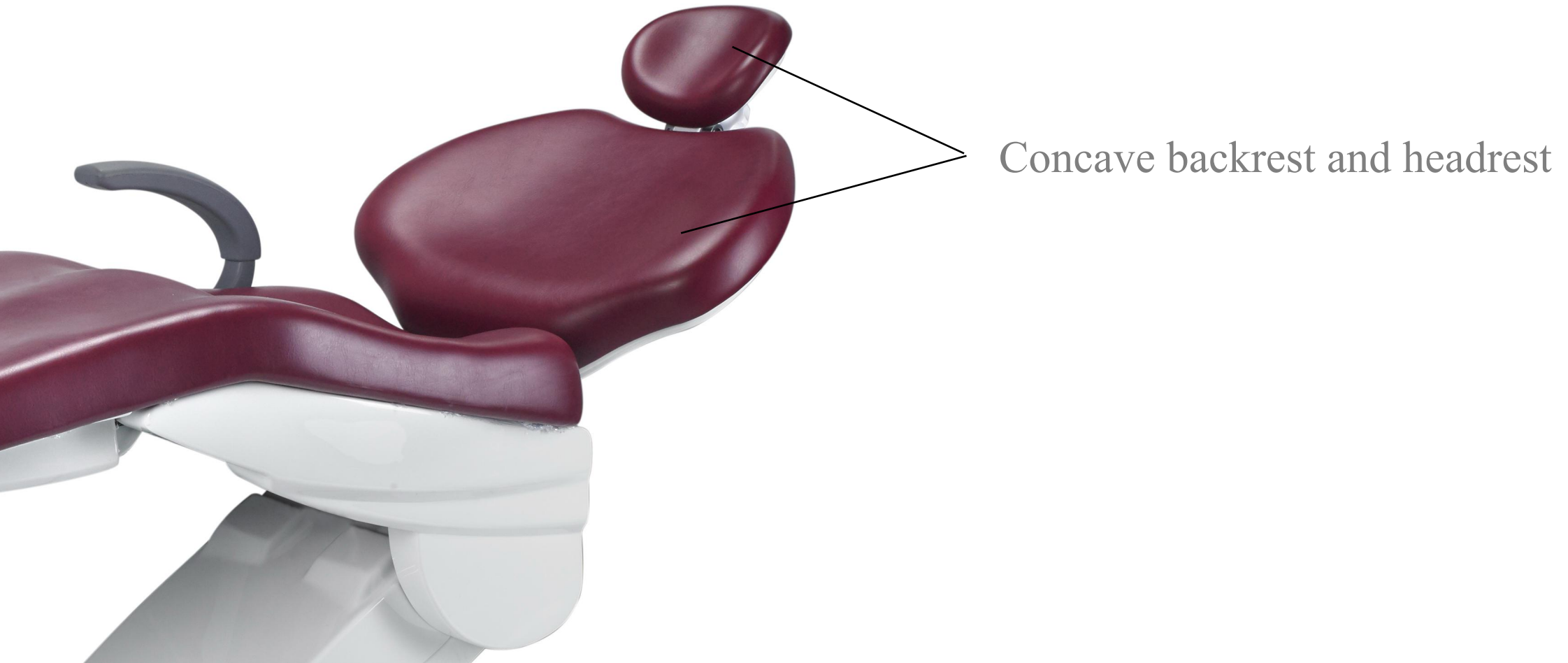
Smooth, easy to clean





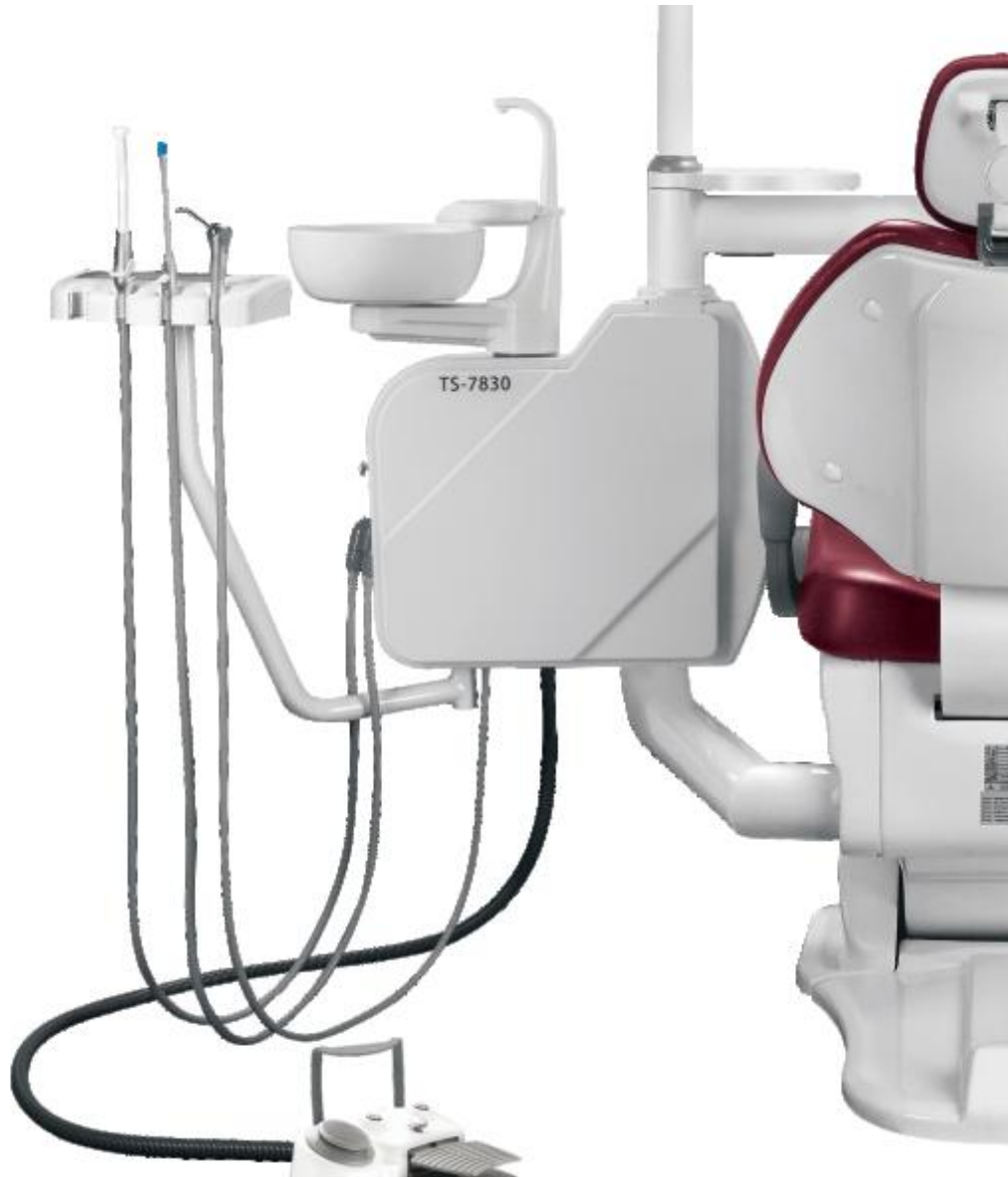
- Wider chair frame enhances the sense of comfort.

- fit and support patient's back and head perfectly.



- Multi-Angle Adjustable Headrest





- **Easy four hand operation**

Rotatable side box

- **Easy maintenance**

Double door open design

- **Stable**

Connecting with the center of the chair

- **Safety**

Air, water and electricity are separated

Polyether water/air tubings, 5 years or even longer life span.



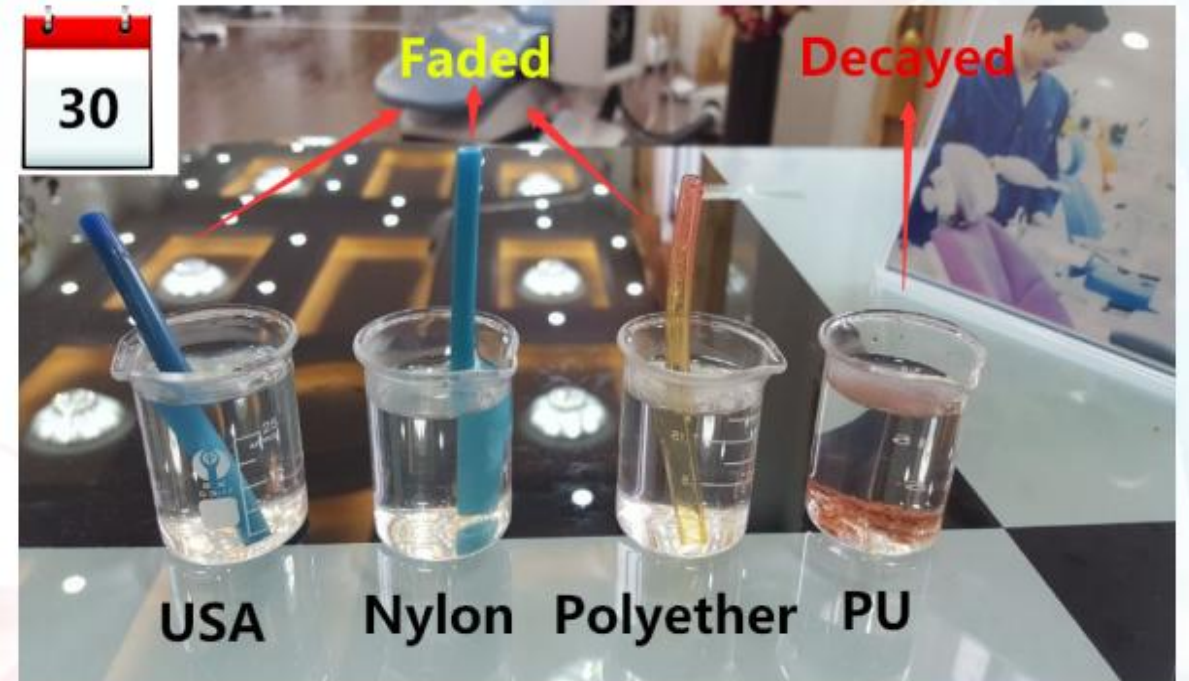
Nylon material tube (same material with the car) for water heater which is essential.



Testing of water & air tubing with strong acid



Day 1



After 30 days...

After one month, the "normal PU tube" was broken and corrupted. At the meantime, the "imported USA tubing", "polyether tubing", "nylon tubing" just became transparent, indicating that they are very durable.



- Denmark LINAK Motor

- **Ceramic Spittoon**

Rotatable & Detachable





- **Built-out filter cup**

easy to clean



- Large table with film viewer
- Injection molding, beautiful and durable
- 90° rotation hanger
- 6 pcs handpiece holders
- Durable Taiwan imported handpiece tube



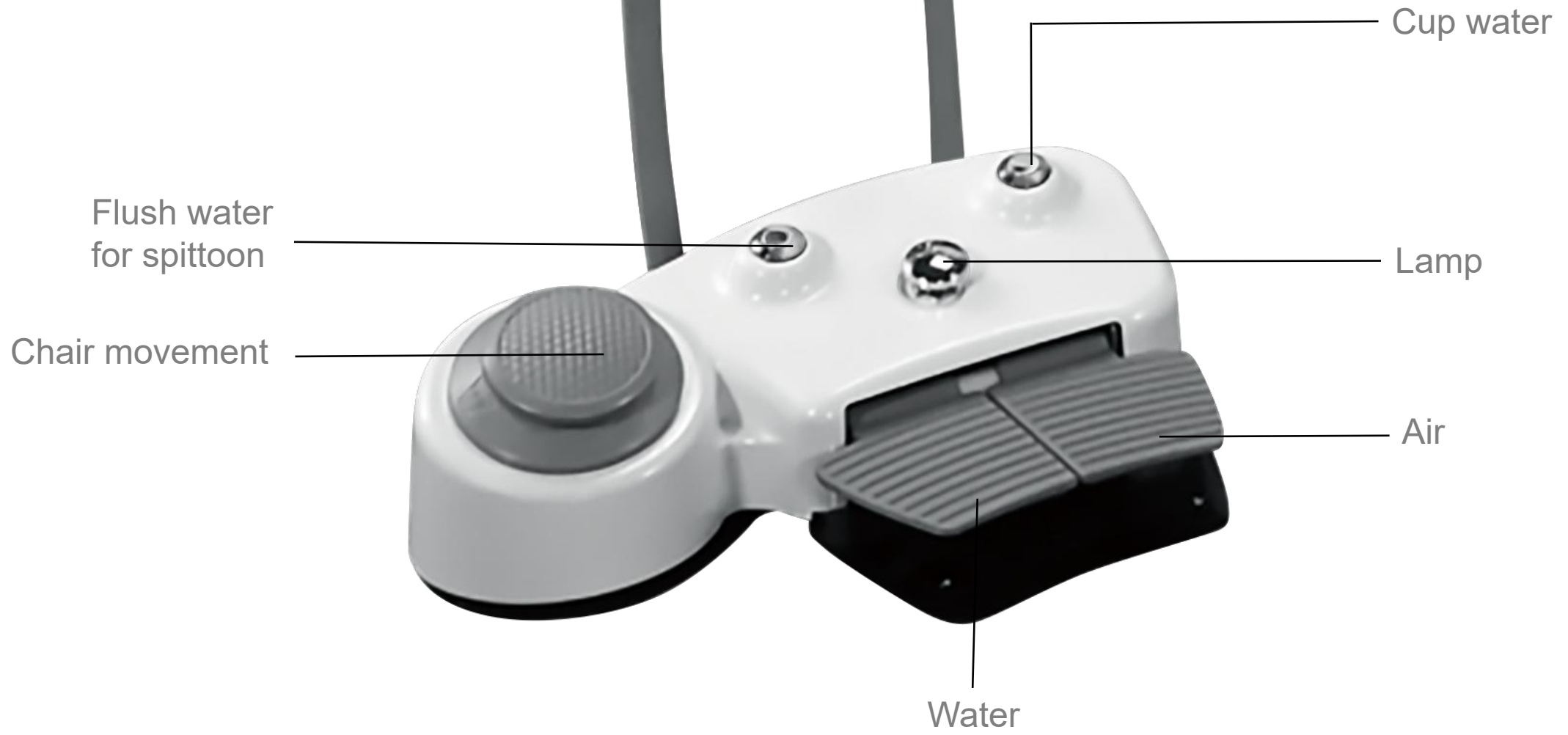
- Resetting position function
- Chair movement adjustment
- Spittoon cleaning function
- Cup water (cold/warm) function



- Injection molding, more durable
- Chair movement & water controlling function
- Aluminum high speed and low speed suction
- Tool putting space

- Large operation lamp
- Illumination intensity: 8000-30000 Lux
- Reflection light sources, soft and not dazzling
- White and yellow light sources
- Inductive controlled, one key switching light sources
- Detachable handle for easy disinfection





Multifunctional

Integrated

Assistant Stool



Luxury PU Leather



Certification



CE



ISO



Free sales



Medical device registration certificate

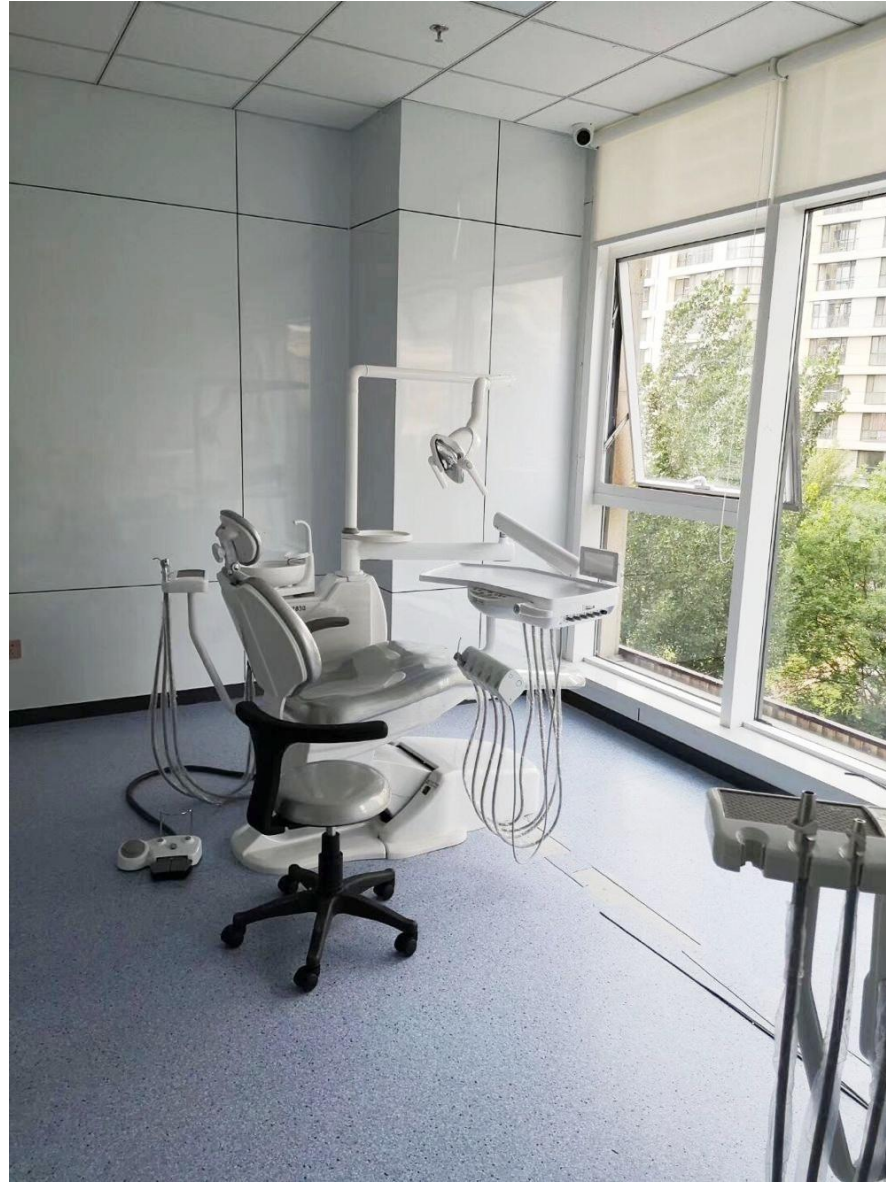


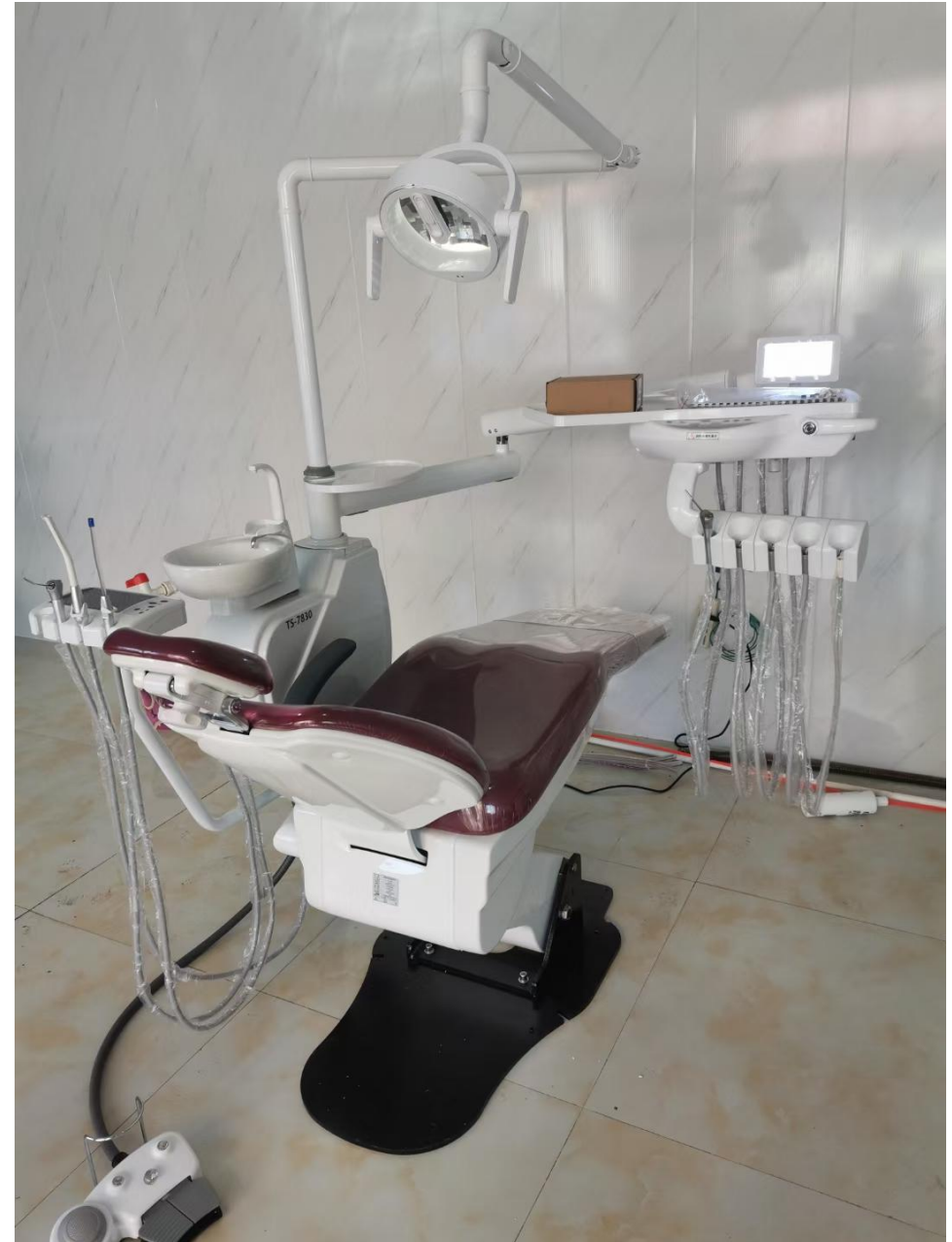
Business License

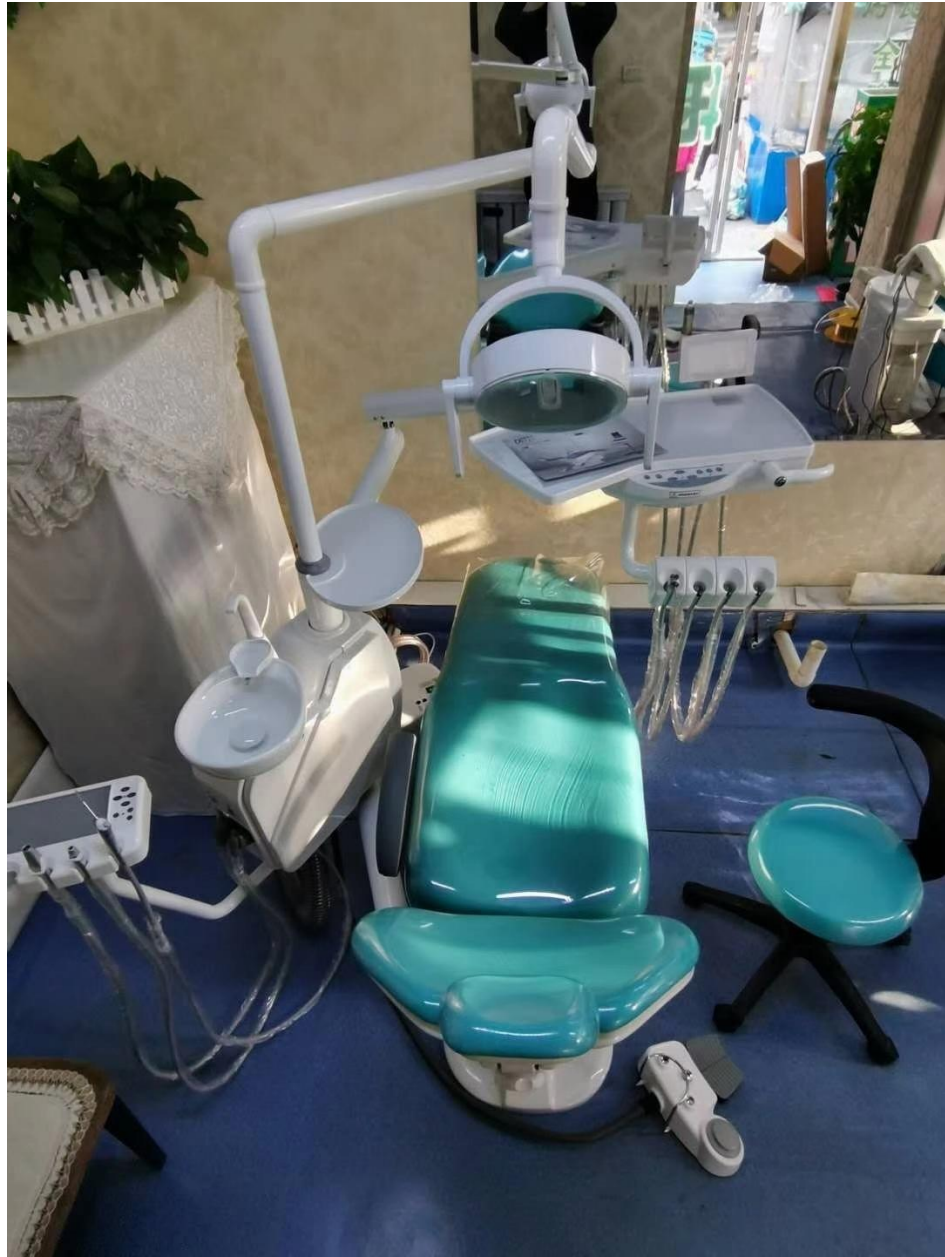


Production License

CASES













Workshop



丹特思[®]
Detes
DETES MEDICAL SUPPLIES



Packing



Company Profile



Detes obtained registration and production license of dental unit.

2002



1999

Detes came out.



2003

Detes started to participate in the Guangzhou South China International Dental Exhibition(Eighth)

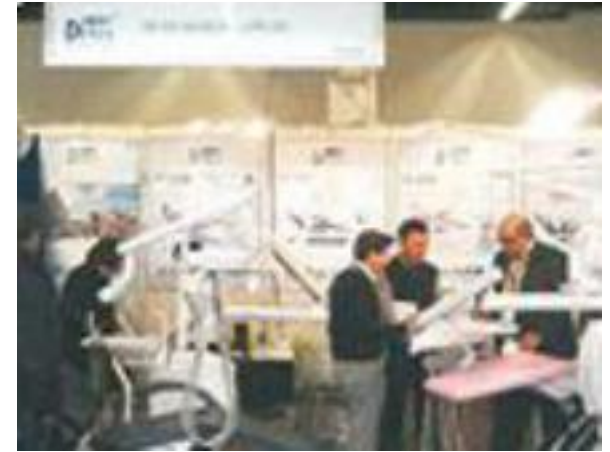


2005

ISO9001, ISO13485, CE certificate.
Detes participated in Dubai +
Singapore exhibition and became
the first one enterprise exporting
dental chairs in dental industry in
China.

Detes attended “5S” activities
and “BLUE” start to be the
corporate color, shaping the
corporate culture.

2006



2013

Detes participate in
Germany IDS exhibition.





2014

Detes participated in
Singapore exhibition.



2016

Detes participated in
Turkey exhibition.

2018



**Guangzhou South China International Dental Exhibition
(the twenty-third)**



Dubai AEEDC International Dental Exhibition



**Beijing Sino Dental International Exhibition
(the twenty-third)**



**Shanghai DenTech International
Dental Exhibition
(the twenty-third)**

2019

**Germany IDS International Dental
Exhibition**





Dubai AEEDC
International Dental
Exhibition
2021



2020

Dubai AEEDC
International Dental
Exhibition



2022

Guangzhou South
China International
Dental Exhibition



2023

**Germany IDS International
Dental Exhibition**

2024

Dubai AEEDC International Dental Exhibition



Guangzhou South China International Dental Exhibition

Beijing Sino-Dental Exhibition



Thank you!